

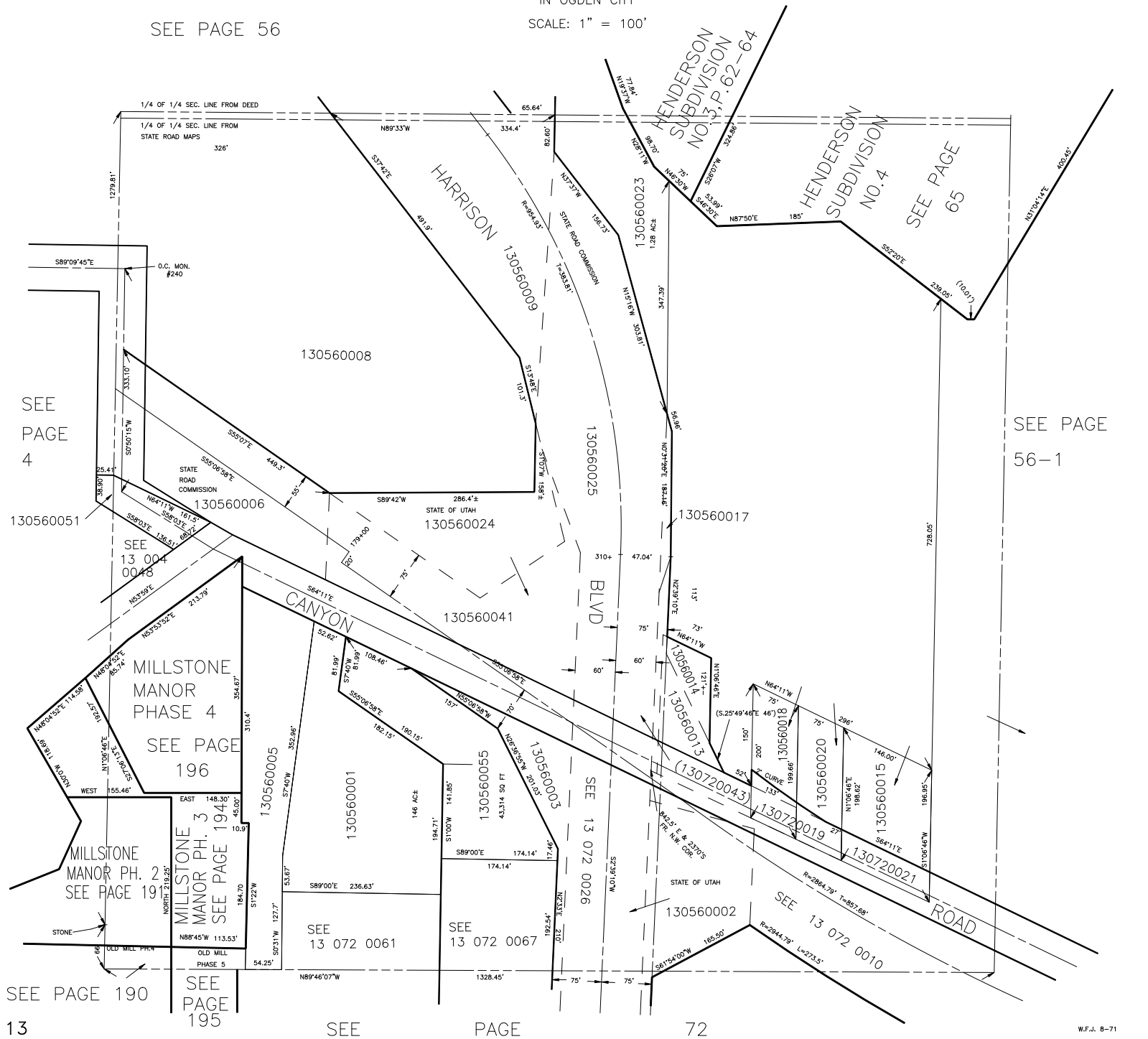
TAXING UNIT: 25

S.W. 1/4 OF N.W. 1/4
SECTION 22, T.6N.,R.1W., S.L.B.&M.

PREFIX: 13-056

SEE PAGE 56

IN OGDEN CITY
SCALE: 1" = 100'



SEE PAGE 190

SEE PAGE 195

SEE

PAGE

72